

ISS-8P-VAHP

<https://www.gigahertz-optik.com/en-us/product/iss-8p-vahp/>

Product tags:



Description

The uniform light source ISS-8P-VAHP is based on a ODM98 coating and offers an 19 mm light entrance port. Furthermore the system is equipped with a LS-OK30 light source and a manual aperture (LS-OK30-VA) for continuous intensity adjustment (luminance/radiance) and a filter holder which (LS-OK30-HPA) can be loaded by an OD1 and OD2 filter.

Intensity adjustment

With the help of the manual aperture the radiance/luminance of the sphere can be continuously adjusted to the desired level. For enhancing the dynamic OD1 and OD2 optical density filter can be loaded. By doing this the intensity level is jumping to a new working point where as well a manual intensity adjustment can be performed by the aperture. A quality measure for the intensity adjustment is a constant color temperature and no change in the homogeneity of the light entrance port. Both is achieved by the ISS-8P. The combination of the aperture and optical density filters makes this ISS-8P version the one with the largest dynamic range.

The light source can be equipped with LF-F or LH-F-UV quartz halogen lamps in the range of 5 W to 100 W. The power will be selected according to the needed radiance/luminance.

Calibration

A calibration with included calibration certificate (cd/m^2) and/or spectral radiance ($\text{W}/(\text{m}^2\text{sr})$) which is traceable to a national standard can be optionally purchased. The calibration is done by our internal calibration laboratory.

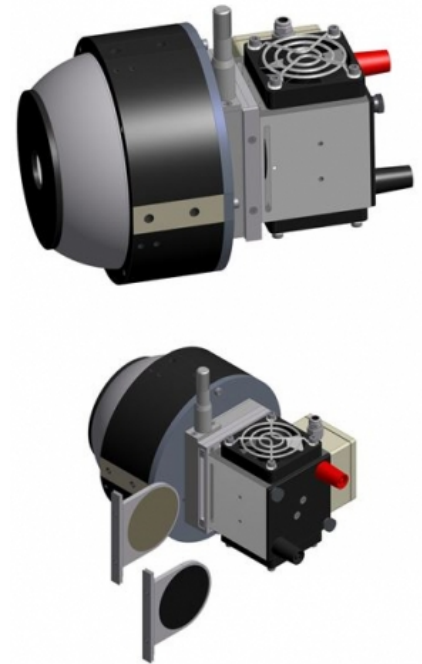
Option

For operation an optional quality current regulated power supply of the [LPS series](#) can be used.

Specifications

General

Short description	Integrating sphere source with 19 mm Diameter light output port. Tungsten halogen lamp up to 100 W. Three steps and variable intensity control.
Main features	Compact size. 19 mm Diameter light output port. Synthetic ODM98 coating of sphere and baffle. External lamp housing for tungsten halogen lamps up to 100 W. Three exchangeable holes-pattern attenuation filter (OD0, OD1 and OD2) and variable aperture.



ISS-8P-VAHP

Measurement range	<p>Luminance: OD0: 120000 cd/m², OD1: 12000 cd/m², OD2: 1200 cd/m² (at CCT 2960K with LH-100F-UV)</p> <p>Luminance: OD0: 75000 cd/m², OD1: 7500 cd/m², OD2: 750 cd/m² (at CCT 2856K with LH-100F-UV)</p> <p>Fine adjustable intensity with variable aperture in each intensity step</p>
Typical applications	Uniform light source for pixel uniformity calibration and adjustment. Intensity control in three steps (OD0, OD1, OD2) by exchangeable neutral density attenuation filters. Fine adjustable intensity in each step by additional variable aperture.
Calibration	Luminance at 100 % intensity. Optional calibration of the spectral radiance (380 nm to 1100 nm). Calibration certificate with description of the calibration procedure, reference standards applied, traceability and calibration uncertainty.
Calibration	
Calibration uncertainty	<p>luminance (cd/m²): ±3.5% u(k=2)</p> <p>color temperature [K]: ±2% u(k=2)</p>
Specification	
Light Output Port	19 mm

Luminance**Range: Continuous adjustable**

(0 - 57000) cd/m² (at CCT 2960K with LH-100F-UV)

(0 - 39000) cd/m² (at CCT 2856K with LH-100F-UV)

OD0 VA 100 % open:

57000 cd/m² (at CCT 2960K with LH-100F-UV)

39000 cd/m² (at CCT 2856K with LH-100F-UV)

OD0 VA 10 % open:

5700 cd/m² (at CCT 2960K with LH-100F-UV)

3900 cd/m² (at CCT 2856K with LH-100F-UV)

Δ CCT = +10 K

OD1 VA 100 % open:

5700 cd/m² (at CCT 2960K with LH-100F-UV)

3900 cd/m² (at CCT 2856K with LH-100F-UV)

Δ CCT = -10 K

OD1 VA 10 % open:

570 cd/m² (at CCT 2960K with LH-100F-UV)

390 cd/m² (at CCT 2856K with LH-100F-UV)

Δ CCT = 0 K

OD2 VA 100 % open:

570 cd/m² (at CCT 2960K with LH-100F-UV)

390 cd/m² (at CCT 2856K with LH-100F-UV)

Δ CCT = -20 K

OD2 VA 10 % open:

57 cd/m² (at CCT 2960K with LH-100F-UV)

39 cd/m² (at CCT 2856K with LH-100F-UV)

Δ CCT = -10 K

OD2 VA 1 % open:

5,7 cd/m² (at CCT 2960K with LH-100F-UV)

3,9 cd/m² (at CCT 2856K with LH-100F-UV)

Δ CCT = 0 K

OD2 VA <1 % open:

Δ CCT = continues to change

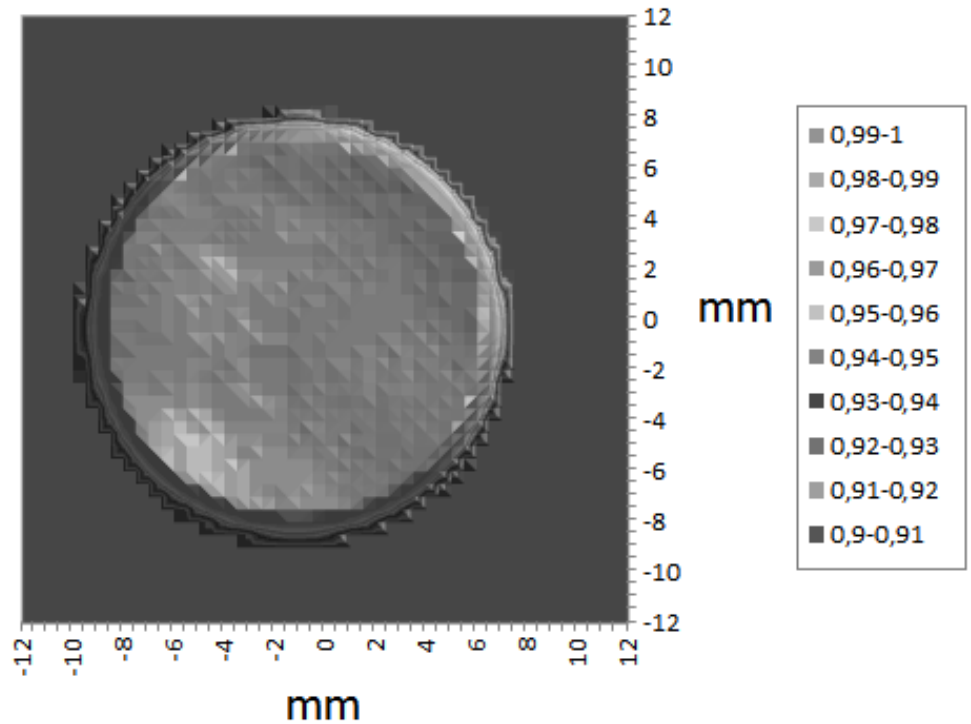
Lamp Connection

Two Banana type plugs

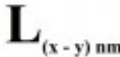


Specifications

80 mm ODM speher with 19 mm light entrance port

Graphs



Configurable with

Product Name	Product Image	Description	Go to product
KLW-S3		Calibration of the spectral radiance. Features: Factory calibration	https://www.gigahertz-optik.com/en-us/product/klw-s3/
KLW-R3		Calibration of the radiance. Features: Factory calibration	https://www.gigahertz-optik.com/en-us/product/klw-r3/
ED-ISS-100-MD		Control electronic for integrating sphere sources	https://www.gigahertz-optik.com/en-us/product/ed-iss-100-md/

Purchasing information

Article-Nr	Modell	Description
Product		
15297930	ISS-8P-VAHP	Integrating sphere source for quartz halogen lamps (series LH-F and LH-F-UV: 5 W to 100 W). Manual variable aperture and optical density filters (OD0, OD1 and OD2) for intensity regulation. Included are fan, power supply for the fan and banana plug connectors.

Contact, Calibration, Service & Support

We are known worldwide for excellent technical consulting and after sales support. Contact us to find together the best solution for you. Our services:

- Technical Consulting & Sales
- After-Sales Support
- Calibrations & Re-Calibrations ([ISO/IEC 17025 Calibration Services](#), [factory calibration](#), [Calibration of Third-Party Products](#))
- Repairs & Updates
- OEM & Feasibility Consulting of Customized Solutions

[Send us your inquiry](#) or contact us by phone or e-mail. We would welcome your feedback too or review us on [Google](#).

Gigahertz Optik GmbH (Headquarter)

Tel.: +49 (0)8193-93700-0
Fax: +49 (0)8193-93700-50
info@gigahertz-optik.de

An der Kaelberweide 12
82299 Tuerkenfeld, Germany

Gigahertz-Optik, Inc. (US office)

Phone: +1-978-462-1818
info-us@gigahertz-optik.com

Boston North Technology Park
Bldg B - Ste 205
Amesbury, MA 01913 USA